

# CALICO | PRO

## 1RU VIDEO PROCESSOR

The newest addition to the CALICO PRO family is the ultimate solution for LED applications of all sizes, capable of powering up to 16.5 million pixels across two outputs. It delivers hundreds of low-latency 4K video windows with seamless performance and 24/7 reliability.

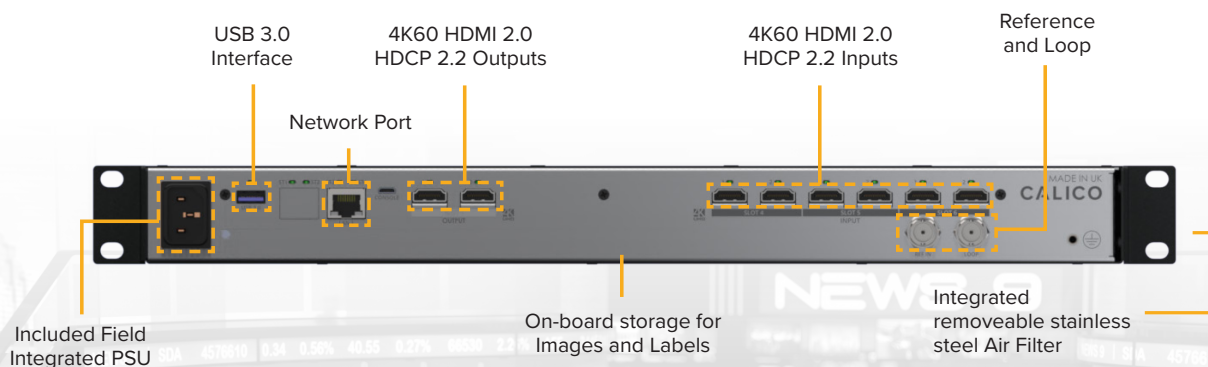
NEW SOLUTION

**BOOST PRODUCTIVITY. REDUCE COMPLEXITY. REDUCE COSTS.**



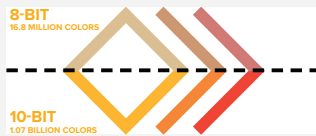
## OUT OF THE BOX PERFORMANCE

CALICO PRO, C7-PRO-1200 is a compact, 10-bit video processor that ships with a fixed I/O configuration of six 4K60 inputs and two 4K60 outputs together with a built-in media store for background images and labels.



# CREATIVITY WITHOUT LIMITATIONS

CALICO PRO, C7-PRO-1200 delivers superior results for 4K video sources and still images at their native resolution utilizing our propriety 10-bit video processing. Our goal is to ensure that no detail is lost from source to display with guaranteed visual perfection right down to pixel level.



## UNRIVALED BANDWIDTH

CALICO PRO is optimized for unrestricted, uncompressed, end-to-end performance even when working with 4K60 video. Using patented tvONE technology, CALICO delivers high data rate video processing levels.

## SUPERIOR COLOR DEPTH

CALICO PRO offers class-leading 10-bit processing for accurate reproduction of even the finest image details. Enjoy accurate color reproduction for correct branding and to enable HDR workflows.

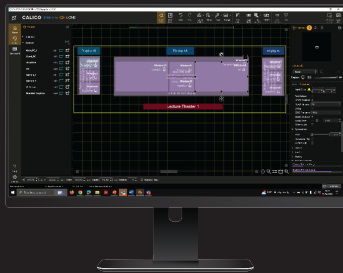
## HUNDREDS OF LAYERS

CALICO PRO offers more layers than you will ever need within an extremely flexible, and easy to set up, stackbased management system allowing for interchangeable 4K and HD resolution layers.

## SOURCE & OUTPUT ROTATION

Both source windows and outputs can be freely rotated from 0° through to 360° allowing ultra creative display set ups.

# CALICO | STUDIO



## POWERFUL AND EASY TO USE SETUP AND CONTROL SOFTWARE



CALICO Studio is the highly intuitive, powerful design software for CALICO PRO. It is easy to configure single or multiple outputs for Direct View LED or create extensive projector edge blends and display walls – you choose! Position and rotate sources and displays with complete freedom and 360° rotation, including borders, dissolves, fades, and animations. Optimized for complex LED set ups, CALICO Studio offers customizable grid lines and snapping tools together with markers and labels for easy asset identification.



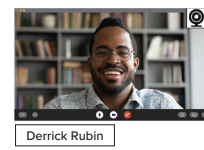
## ADVANCED CROPPING

With CALICO PRO, easily cut multiple sections from any source. In retail, take individual web page elements and reposition them on your canvas or for a small control room, split multiplexed camera feeds into individual camera views.



## KEYING

Enhance the viewer experience and build your brand with real-time keying of sources or graphics. Easily upload and save your favourite graphics to CALICO PRO's fully integrated Media Store ready for instant recall.



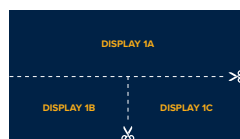
## POWERFUL LABELLING ENGINE

Identify and inform your audience with prominent, customizable labels. Create Text labels, source text labels, image labels and live source and save them as label templates and apply as you wish. Also, labels can be parented to a visual asset for seamless source switching and transitions.



## CANVAS WATCH

Easily monitor your expansive LED, edge-blended projection, or display set-ups with ease for complete peace of mind. Watch multiple layouts from any canvas using a single display or multiple displays. Combine with packaged outputs to deliver multiple watched areas to a single display.



## OUTPUT MAPPING

Maximise your outputs, remove complex cabling and multiple LED controllers. Using CALICO Studio, reposition LED display sections into a real-world view and add content. Then, on output, CALICO PRO automatically repackages the display sections on a single output ready for the LED wall controller.



[sales@tvone.com](mailto:sales@tvone.com) | [sales.europe@tvone.com](mailto:sales.europe@tvone.com) | [www.tvone.com](http://www.tvone.com)

## SCAN FOR MORE

Product Brochure  
Application Brochure

